



**ENGINEER'S CERTIFICATION**

I, \_\_\_\_\_  
 hereby certify that to the best of my knowledge:

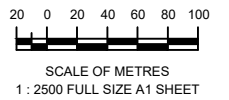
- The information contained in this drawing / document is in compliance with approved drawings and design and approved construction amendments.
- The new water and sewerage works defined by this drawing have been designed and constructed in accordance with the SEQ Code.
- This represents an accurate record of as-constructed works.
- I accept responsibility for the information contained in this drawing / document.

-----  
 RPEQ (signature)      RPEQ No.      Date:

**REGISTERED SURVEYOR'S CERTIFICATION**

We, Veris Australia Pty Ltd, hereby certify that the vertical and horizontal locations and dimensions shown on this plan are a true and correct record of the As Constructed survey.

*Alastair Byrom*      6448      16-12-2021  
 Cadastral Surveyor      Reg. No.      Date  
 & Delegate



**A1**

REV NO	DATE	REVISION PURPOSE / DESCRIPTION	DRAWN	RPEQ	RPEQ No	APPROVED	INITIALS	DATE
C	07/12/2021	FINAL	GJF			DRAWN	ELH	22/10/2021
B	06/12/2021	PROGRESS PLOT	GJF			CHECKED		
A	22/10/2021	PROGRESS PLOT	ELH			APPROVED		



BRISBANE (07) 3866 4700      WHITSUNDAYS (07) 4945 9000  
 MACKAY (07) 4607 9700      CAIRNS (07) 4332 9400  
 VERIS.COM.AU  
 ACN 610 750 727  
 Veris Australia Pty Ltd

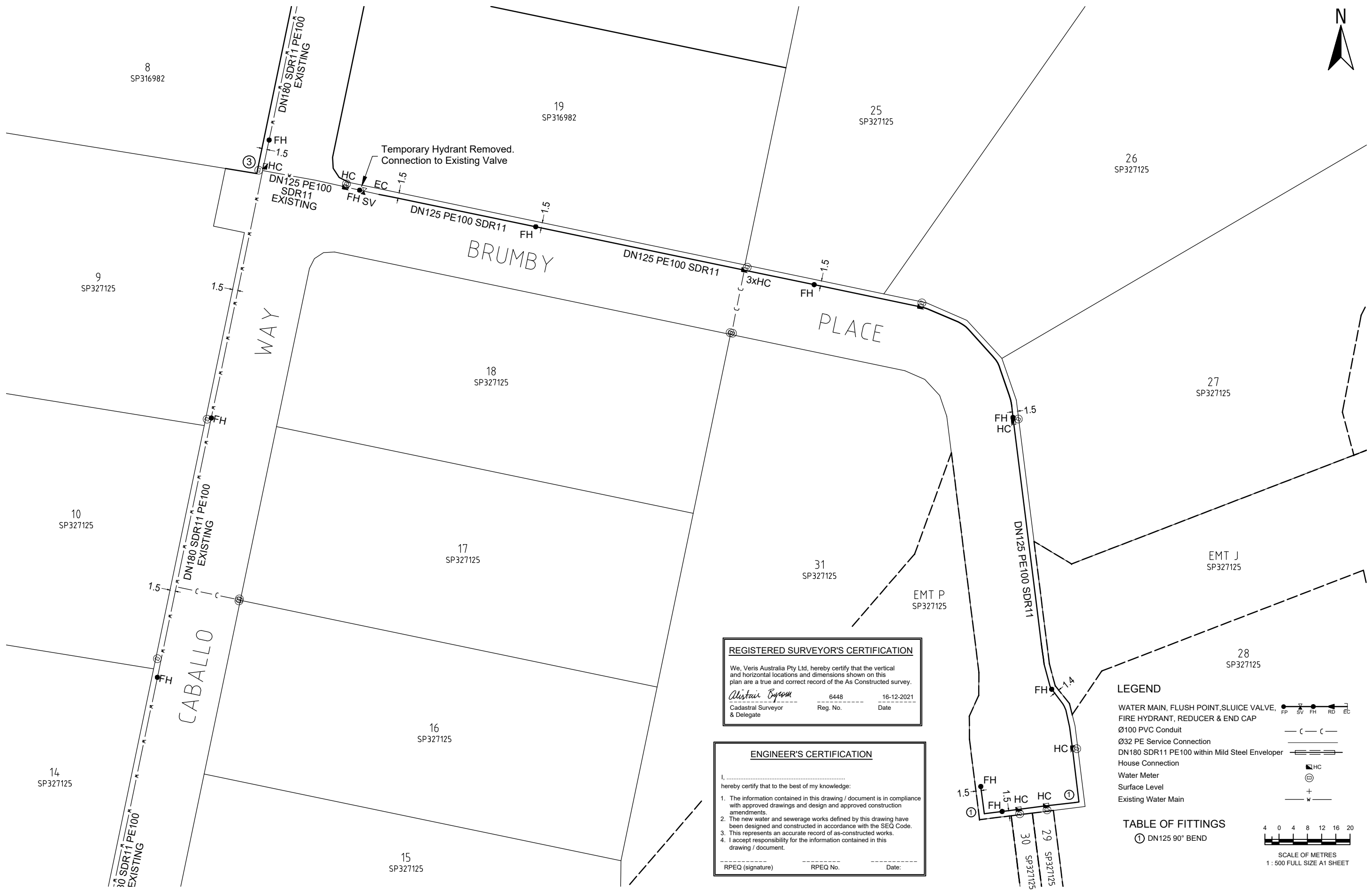
**CABALLO PARK ESTATE - STAGE 2  
 KILCOY**

**WATER RETICULATION  
 URBAN UTILITIES 21-PNT-50379**

DRAWING STATUS  
**AS CONSTRUCTED**

SHEET 1 OF 3 SHEETS

DRAWING NO.      REV.  
**425162-AW02**      **C**



**REGISTERED SURVEYOR'S CERTIFICATION**

We, Veris Australia Pty Ltd, hereby certify that the vertical and horizontal locations and dimensions shown on this plan are a true and correct record of the As Constructed survey.

*Alistair Byrom* 6448 16-12-2021  
 Cadastral Surveyor Reg. No. Date

**ENGINEER'S CERTIFICATION**

I, \_\_\_\_\_ hereby certify that to the best of my knowledge:

- The information contained in this drawing / document is in compliance with approved drawings and design and approved construction amendments.
- The new water and sewerage works defined by this drawing have been designed and constructed in accordance with the SEQ Code.
- This represents an accurate record of as-constructed works.
- I accept responsibility for the information contained in this drawing / document.

\_\_\_\_\_  
 RPEQ (signature) RPEQ No. Date:

- LEGEND**
- WATER MAIN, FLUSH POINT, SLUICE VALVE, FIRE HYDRANT, REDUCER & END CAP
  - Ø100 PVC Conduit
  - Ø32 PE Service Connection
  - DN180 SDR11 PE100 within Mild Steel Enveloper
  - House Connection
  - Water Meter
  - Surface Level
  - Existing Water Main
- 

**TABLE OF FITTINGS**

① DN125 90° BEND

SCALE OF METRES  
1 : 500 FULL SIZE A1 SHEET

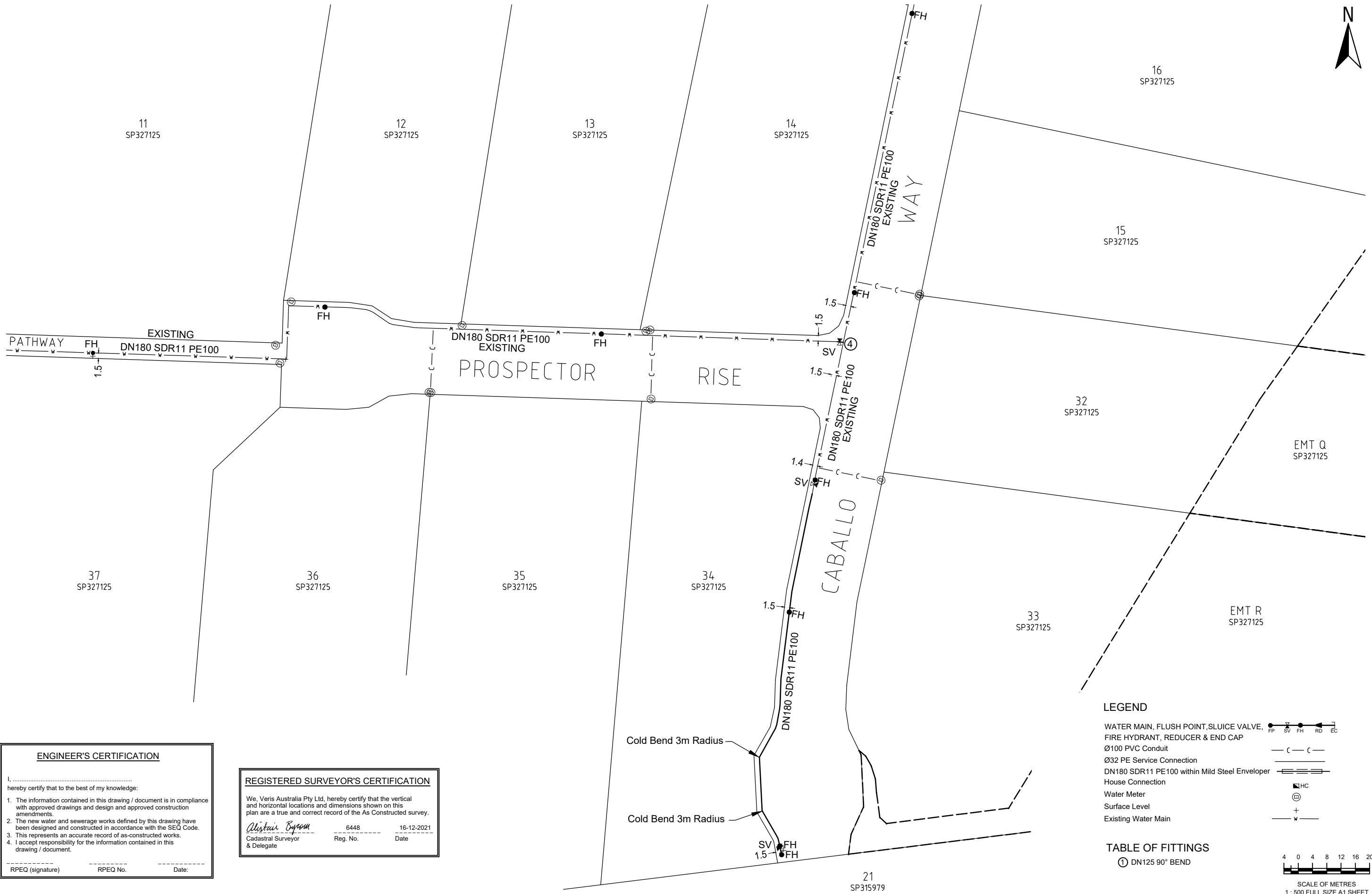
A1

REV NO	DATE	REVISION PURPOSE / DESCRIPTION	DRAWN	RPEQ	RPEQ No.	INITIALS	DATE
C	07/12/2021	FINAL	GJF			DRAWN	22/10/2021
B	06/12/2021	PROGRESS PLOT	GJF			CHECKED	
A	22/10/2021	PROGRESS PLOT	ELH			APPROVED	



CABALLO PARK ESTATE - STAGE 2  
 KILCOY  
 WATER RETICULATION  
 URBAN UTILITIES 21-PNT-50379

DRAWING STATUS <b>AS CONSTRUCTED</b>	
SHEET 2 OF 3 SHEETS	
DRAWING NO. <b>425162-AW02</b>	REV. <b>C</b>



**ENGINEER'S CERTIFICATION**

I, \_\_\_\_\_  
 hereby certify that to the best of my knowledge:

- The information contained in this drawing / document is in compliance with approved drawings and design and approved construction amendments.
- The new water and sewerage works defined by this drawing have been designed and constructed in accordance with the SEQ Code.
- This represents an accurate record of as-constructed works.
- I accept responsibility for the information contained in this drawing / document.

-----  
 RPEQ (signature)      RPEQ No.      Date: -----

**REGISTERED SURVEYOR'S CERTIFICATION**

We, Veris Australia Pty Ltd, hereby certify that the vertical and horizontal locations and dimensions shown on this plan are a true and correct record of the As Constructed survey.

*Alistair Byrom*      6448      16-12-2021  
 Cadastral Surveyor      Reg. No.      Date  
 & Delegate

- LEGEND**
- WATER MAIN, FLUSH POINT, SLUICE VALVE, FIRE HYDRANT, REDUCER & END CAP
  - Ø100 PVC Conduit
  - Ø32 PE Service Connection
  - DN180 SDR11 PE100 within Mild Steel Enveloper
  - House Connection
  - Water Meter
  - Surface Level
  - Existing Water Main
- 

**TABLE OF FITTINGS**

① DN125 90° BEND

SCALE OF METRES  
 1 : 500 FULL SIZE A1 SHEET

<b>A1</b>	C	07/12/2021	FINAL	GJF		DRAWN	ELH	22/10/2021
	B	06/12/2021	PROGRESS PLOT	GJF		CHECKED		
	A	22/10/2021	PROGRESS PLOT	ELH		APPROVED		
	REV NO	DATE	REVISION PURPOSE / DESCRIPTION	DRAWN	RPEQ	RPEQ No.	INITIALS	DATE



**CABALLO PARK ESTATE - STAGE 2  
 KILCOY**

**WATER RETICULATION  
 URBAN UTILITIES 21-PNT-50379**

<b>DRAWING STATUS</b> <b>AS CONSTRUCTED</b>	
SHEET 3 OF 3 SHEETS	
DRAWING NO. <b>425162-AW02</b>	REV. <b>C</b>